



**Investments  
Engineering  
Construction**

*ACTION GENERATES A NEW REALITY*



**JOINT STOCK COMPANY**

**“INVESTMENTS. ENGINEERING. CONSTRUCTION.”**

## I. INVESTMENTS. ENGINEERING. CONSTRUCTION. JSC

FACTS AND FIGURES

OUR TEAM

FINANCIAL FIGURES

CORPORATE STRUCTURE

ACTIVITIES

KEY COMPETENCES

WORK GEOGRAPHY

EQUIPMENT CAPABILITY

PERMITS AND LICENSES

4

5... 7

8

9

10

11

12

13... 15

16

## II. CONTACTS

HEAD OFFICE IN SAINT-PETERSBURG,

BRANCHES IN MOSCOW, KALININGRAD, GDANSK

17

## III. ANNEX

OUR FACILITIES. CONSTRUCTION AND INSTALLATION WORK

OUR FACILITIES. SURVEY & DESIGN WORK

IEC PROJECTS EXAMPLES

DREDGING FACILITIES

18

19

20... 30

31



## I. IEC FACTS AND FIGURES

**2007**

year of IEC establishment

**450**

corporate employees

**Over 100**

completed projects

**in 12**

cities of Russia

**17 550 km**

total length of built  
embankments,  
shore protection structures  
and quays

### IEC HEAD OFFICE

in **St. Petersburg**

### IEC BRANCHES

in **Kaliningrad, Gdansk**

**FIDIC & VERITAS** certification

**EUR 451 million**

ongoing contracts' value

**EUR 360 mln**

construction  
projects

**EUR 11 mln**

survey & design  
projects

**78 000 tons**

total weight of installed tube-piles,  
sheet-piles and pile-shells

**101 500 m<sup>3</sup>**

in-situ concrete

**1 579 thou. m<sup>3</sup>**

excavated soil volume

**27**

completed survey & design  
projects

**25**

positive resolutions of the  
"Main Department of State  
Expertise", FAI,  
GlavGosExpertiza of Russia

## I. OUR TEAM. CEOs.



- **Gleb N. EVTUSHENKO**  
Chairman of the Board  
President of of the Charitable Foundation  
for Education "FUTURE"

- Doctor of Science and Technology, (MAISU, USA, 2006)
- MBA (IMISP, St. Petersburg, 1998)
- Saint Petersburg Electrotechnical University (LETI), engineer (1988-1994)

20-years experience in management for the large design engineering and construction corporations (PTPS Corporation OOO; IEC, AO).

Completed several large-scale projects for the construction of hydraulic structures: the Petersburg Oil Terminal (quays No 3, 4); mineral fertilizers transshipment (quay No 106), Petrolesport's container terminals (quays No 42, 46, 47, 48), Primorsk Oil Terminal, Sodruzhestvo Soy's port facilities (Kaliningrad region) etc.

Chairman of the Board of IEC since 2007, over that time the company realised more than 100 industrial projects in 12 cities of Russia.



- **Sergey N. FEDYAEV**  
Director General

30 years of experience in managing the largest enterprises in the North-West region of Russia, including the Onega LDK (woodworking), Petrolesport OJSC and MOBI DIK LLC (port terminals).

Awarded the Order of Merit for the Fatherland and the Certificate of Honor of the Russian Federation Economy Ministry.



- **Igor B. LUKASHENKO**  
IEC Executive Chairman

1988 to 1994 – Served in the Russian Navy.

1994 to 1996 – Russian Federal Tax Police Service employee.

1996 to 2000 - Deputy General Director of SKB Svyatogor, LLC.

2000 to 2005 - Deputy Chairman of the Management Board at Agropromcredit Commercial Bank, OJSC.

2005 to 2008 - Chairman of the Management Board at Commercial Bank Agroimpuls, OJSC.

2008 to 2009 - Chairman of the Board of Directors of the investment company "Rielt Group".

2009 to 2019 - Chairman of the Board of Directors of IED, LLC.

Construction management of the facilities of the SSK "Zvezda" 1st stage of construction as IED principal contractor. Awarded the State honours and honorary titles.



- **Nikolay V. BOYTSEV**  
Director of Design

15 years' experience in design and engineering companies (including LenGiproRehTrans, CJSC). Participated in the hydraulic structures construction projects for Kaliningrad Stadium, Primorskaya TPP, Nizhne-Svirsky Waterworks Facility, Svir Timber LLC sawmill (Metsa Botnia AB), Nizhneleninsky International River Port, and Priluki Transshipment Base on the Yenisei river etc.



## I. OUR TEAM. CEOs.

- **Dmitry A. TISCHENKO**  
**IEC First Deputy General Director**



Dmitry has longstanding professional experience as CEO and chief engineer at major companies of the shipbuilding industry. (CES LLC branch in Vladivostok, SK Stroy Group LLC branch in Bolshoi Kamen city, DVZ Zvezda OJSC, StroyKontrol LLC, Rosdorsnabzhenie CJSC).

He has extensive experience in the construction and commissioning of large production facilities and hydraulic structures (Zvezda SSK: "Hull facilities building", 64,000 m., 60,000 tons of metal per year, "Cleaning, painting and drying chambers", 25,000 m2, "Heavy outfitting slipway", 120 000 m2, five slipway lines). Management of the 1st stage of construction of the shipyard "Zvezda - DSME".

- **Vladimir V. KHUDOLEEV**  
**IEC Deputy General Director for Economics and Finance**



Vladimir has 20 years' work experience as the head of Financial Services for major companies, including 15 years of work in construction.

Vladimir participated in the reconstruction of the hydraulic structures of Moscow Canal, the construction of the Vostochny space airfield, the Olympic facilities in Sochi, the facilities of the Russian Ministry of Defense. He was involved in construction of oil loading facilities and train preparation centers in the cities of Uyar and Skorovodino, Nassiriya TPP, 500 kV substation Kaskadnaya, 500 kV transmission line Abakanskaya-Itatskaya, other various industrial, infrastructural and housing construction facilities.

- **Vassily V. Nabokov**  
**Commercial and Business Development Director**



Many years of experience in commerce and construction. Held leading positions in Russian and International companies as IC Astaldi Içtaş (Turkey), DB International (Berlin, Germany). Participated in the implementation of large-scale projects in Russia and abroad (construction of St.Petersburg Western High-Speed Diameter and a railway in Germany).

- **Alexander Y. Smirnov**  
**Dredging Director**



18 years of engineering and management experience in dredging and underwater engineering. Participated in the construction projects' implementation for St.Petersburg "Morskoy Fassad" Passenger Port, Cargo Handling Terminal (Ust-Luga Port), in reconstruction of the St. Petersburg Sea Canal etc.

## I. OUR TEAM. PROJECT OFFICERS. PRODUCTION.



**Sergey V. Tretyakov**

**Project Officer**

St. Petersburg Yacht Club,  
"Hercules" yacht-port



**Alexander N. Semyonkin**

**Project Officer**

A shipyard, Kaliningrad region



**Sergey A. Yeryomin**

**Project Officer**

Primorskaya Thermal Power Plant (TPP)



**Nikolay N. Sidorov**

**Project Officer**

Gutuevsky basin,  
St. Petersburg Big Port seaport



### IEC PRODUCTION TEAMS AT CONSTRUCTION SITES COMPRISE:

**170**  
installers

**110**  
electric and gas welders  
(including NAKS certified welders)

**120**  
concrete workers

**53**  
machine operators



**KT3** KOLPINO  
PIPE  
PLANT

IEC is the exclusive distributor  
for Kolpinsky Tube Plant (KTZ)  
products in EU

IEC operates certified welding  
workshop NAKS (National  
Agency for Welding  
Qualification) at KTZ with

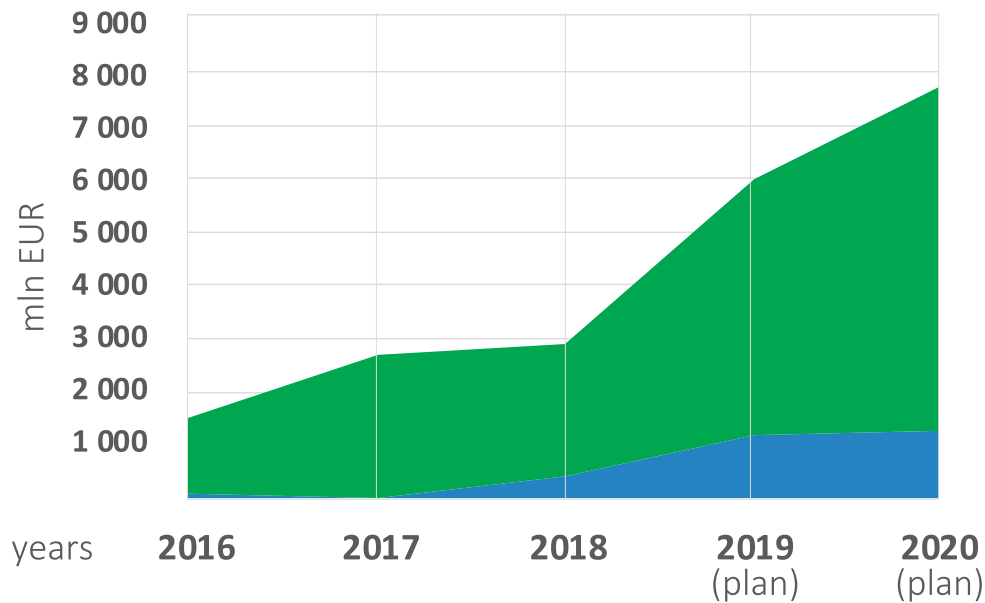
**50** staff workers

## I. FINANCIAL FIGURES

IEC ANNUAL BUSINESS REVENUE, from 2016 to 2020

BUSINESS ACTIVITIES	REVENU (mln EUR excl. VAT)				
	2016	2017	2018	2019 (plan)	2020 (plan)
Survey & design work	902	213	4 056	11 959	12 870
Construction and installation work	14 157	26 807	25 013	47 837	64 350
<b>TOTAL</b>	<b>15 059</b>	<b>27 020</b>	<b>29 069</b>	<b>59 796</b>	<b>77 220</b>

IEC REVENUE



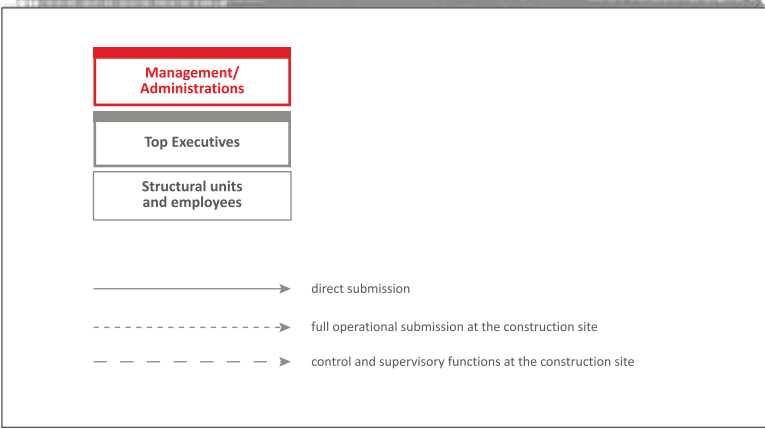
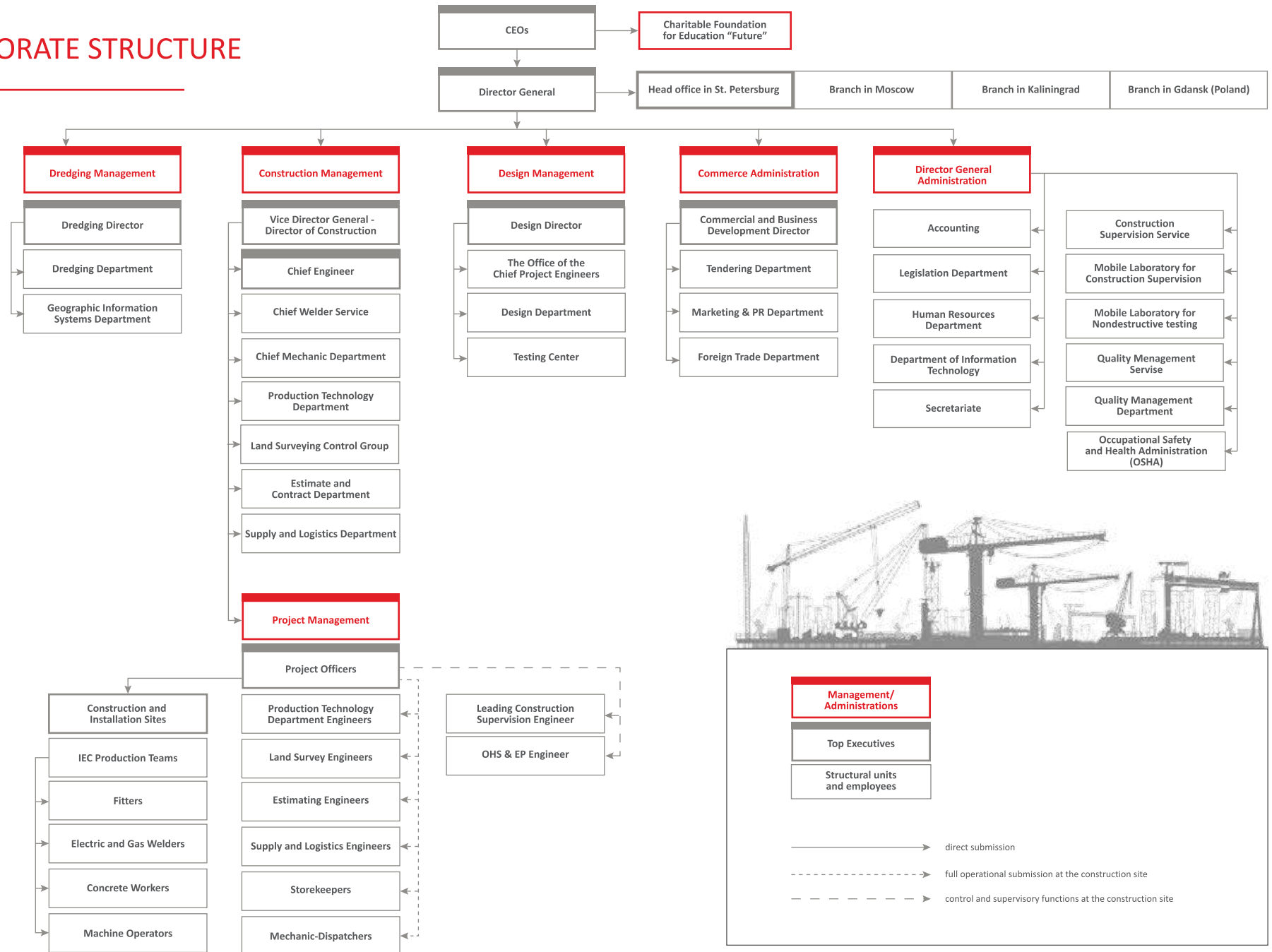
**EUR 127 million**  
ongoing contracts' value

**EUR 110 mln**  
construction  
projects

**EUR 17 mln**  
survey &  
design projects

- Construction and installation work
- Survey & design work

# I. CORPORATE STRUCTURE



# I. ACTIVITIES

## ACTIVITIES

### PROJECT ENGINEERING

#### DESIGN

- Pre-project activities (business plans, concepts, investment feasibility study)
- Project Documentation Development for construction
- Technical and Engineering Support of construction

#### PROJECT MANAGEMENT (EPCM)

- Construction Management:
  - supervision of subcontractors' work performance
  - cost management and procurement planning
- Supervision of construction activities:
  - hydrographic and land survey support
  - implementation of environmental control
  - expertise of design solutions

### CONSTRUCTION

#### HYDRAULIC STRUCTURES CONSTRUCTION

- Dredging
- Shore protection at coastline
- Land reclamation
- Construction of ports, piers and quays

#### INDUSTRIAL AND CIVIL CONSTRUCTION

- Arrangement of pile foundations
- Arrangement of complicated deep ditches
- Construction of underground structures
- Installation of metal structures



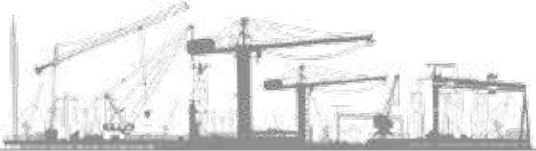
## I. KEY COMPETENCE

---

- Integrated design, general contractor functions (EPC, EPCF, EPCM).
- Design and construction synergy.
- Reducing the construction & operation cost due to optimal design solutions.
- International project management standards application.
- Sophisticated industrial design and construction tasks implementation.
- Mobility, wide geography of construction sites.



# I. WORK GEOGRAPHY



- Arkhangelsk
- Veliky Novgorod
- Volga-Caspian channel
- Yeisk
- Kaliningrad
- Krasnoyarsk
- Lesosibirsk
- Murmansk
- Sabetta
- Salekhard
- St. Petersburg
- Surgut



# I. EQUIPMENT CAPABILITY

IEC operates its own fleet of vibratory pile drivers, load-lifting and earth-moving construction equipment:

- Vibratory pile drivers, hydraulic hammers
- Crawler and mobile cranes
- Road building machines
- Drilling and pile driving equipment
- Mobile construction laboratory
- Special instrumentation for construction of bridges

All equipment meets the requirements of modern Russian and international standards.

## VIBRATORY PILE DRIVING EQUIPMENT



- **Vibratory pile driver with side grip**

**Manufacturer:** Özkanlar Grup Makine AŞ

**Model:** OVR 70 S6

**Specifications:** mass 1.46 tons, eccentric moment 7.4 kg.m, centrifugal force 511 kN



- **Suspended crane vibratory pile driver with fixed torque**

**Manufacturer:** TGS Vibro & Hammers Astola Professional Service B.V.

**Model:** Allpacks 125FM

**Specifications:** weight 15 tons, eccentric moment 125 kg.m, centrifugal force 3003 kN



- **Suspended crane vibratory pile driver with normal frequency**

**Manufacturer:** Özkanlar Grup Makine AŞ

**Model:** SVR 101 NF

**Specifications:** weight 14 tons, eccentric moment 101.6 kg.m, centrifugal force 2861 kN



- **Vibratory pile driver with variable amplitude**

**Manufacturer:** PTC Fayat Group

**Model:** PTC 60 HV

**Specifications:** weight 7 tons, eccentric moment 0-60 kg.m, centrifugal force 1893 kN



- **Hydraulic hammer**

**Manufacturer:** IHC IQIP B.V.

**Model:** S-150

**Specifications:** impact weight 7.5 tons, hammer weight 17 tons, impact energy 150 kNm



- **Vibratory pile driver with variable torque**

**Manufacturer:** Özkanlar Grup Makine AŞ

**Model:** SVR 40 VM

**Specifications:** weight 7 tons, eccentric moment 0-40 kg.m, centrifugal force 2328 kN



## I. EQUIPMENT CAPABILITY. LIFTING MACHINES.



- **Crawler crane**

**Manufacturer:** Zhejiang SANY Equipment Co. Ltd.

**Model:** SCC 1000 E

**Technical characteristics:** boom length 13-61 m, boom extension 18 m, loading capacity of 100 tons



- **Crawler crane**

**Manufacturer:** Zhejiang SANY Equipment Co. Ltd.

**Model:** SCC 2600 A

**Specifications:** boom length 17-100 m, load capacity 260 tons



- **Crawler crane**

**Manufacturer:** Zhejiang SANY Equipment Co. Ltd.

**Model:** SCC 1350 E

**Specifications:** boom length 17-80 m, load capacity 135 tons



- **Crawler crane**

**Manufacturer:** Zhejiang SANY Equipment Co. Ltd.

**Model:** SCC 1800 E

**Specifications:** boom length 17-90 m, load capacity 180 tons



- **Truck cranes**

**Specifications:**  
Boom length: 9-31 m  
Boom extension: 9 m

**Load capacity:**  
32/40/42 tons



- **Truck-mounted hydraulic lift**

**Model:**  
BC 22

**Specifications:**  
Boom length: 22 m

## I. EQUIPMENT CAPABILITY. EARTH-MOVING EQUIPMENT.



### • Bulldozers

**Manufacturer:** Shantui Construction Machinery Co Ltd

**Model:** Shantui SD 16 L

**Specifications:** weight 18 tons



### • Front-end wheel loaders

**Manufacturer:** Hitachi Construction Machinery

**Model:** ZW 220-5A

**Specifications:** bucket 3.5 m<sup>3</sup>



### • Crawler Excavators

**Manufacturer:** Hyundai Heavy Industries Construction Equipment

**Model:** HX 330 L

**Specifications:** bucket 1.9 m<sup>3</sup>, weight 33.5 tons; equipped to work with a vibratory pile driver model OVR 70 SG



### • Wheel excavator-loaders

**Manufacturer:** Hyundai Heavy Industries Construction Equipment

**Model:** H940S

**Specifications:** front-end multi-purpose bucket 1 m<sup>3</sup>, general purpose rear bucket 0.4 m<sup>3</sup>



### • Crawler Excavators

**Manufacturer:** Hyundai Heavy Industries Construction Equipment

**Model:** HX 300 L

**Specifications:** boom length 18 m, bucket 0.5 m<sup>3</sup>, weight 40 tons



### • Crawler Excavators

**Manufacturer:** Hitachi Construction Machinery

**Model:** ZX130-5G

**Specifications:** bucket capacity 1.0 m<sup>3</sup>



## I. PERMITS AND LICENSES

IEC has all the necessary permits and licenses for the implementation of activities in the field of design, construction of buildings and structures and dredging works, including:

- Construction of facilities worth up to 10 bill. ₸
- Engineering design of facilities worth up to 300 mill. ₸
- Development of projects for the construction of highly dangerous facilities
- Performance of all types of survey work worth up to 300 mill. ₸
- Performance of work using information constituting a state secret;
- Implementation of capital construction and reconstruction of the facilities belonging to Gazprom PAO;
- Performance of activities on preserving the cultural heritage of peoples of the Russian Federation;
- Performance of activities on installation, maintenance and repair of fire safety equipment for buildings and structures
- Certificate of the National Agency for Welding Qualification for compliance to requirements of RD 03-615-03 code of practice



- **The mobile construction laboratory of IEC** has a compliance certificate № IL-LRI-0232 (valid until May 20, 2019)
- **The mobile laboratory of IEC for non-destructive testing** has a certificate of compliance No. 58A050831 (valid until October 13, 2019)
- The company has Certificate of Conformity of the Integrated Management System for engineering surveys, preparation of project documentation, construction of facilities according GOST R ISO 9000-2008 (ISO 9001: 2008), GOST 54934-2012, OHSAS 18001: 2007, GOST R ISO 14001-2007 (ISO 14001: 2004)
- **Certificate of the National Agency for Welding Qualification** for compliance to requirements of RD 03-615-03 code of practice



## II. CONTACTS

- **IEC head office in St. Petersburg**

“Raduga” Business Center  
12A Kantemirovskaya str.  
St. Petersburg, Russia 194100

+7 (812) 332-32-88  
iec@iec-spb.ru  
www.iec-spb.ru



- **IEC Branch in Moscow**

+7 (981) 998-37-25  
iec@iec-spb.ru

**Moscow Branch Director:**  
Alexey E. Merkushev



- **IEC Branch in Poland, IEC-Polska**

+7 (981) 998-37-26  
iec@iec-spb.ru  
212 ul. Grunwaldzka, Gdansk, Poland

**Branch Director:**  
Vasily V. Nabokov



- **IEC Branch in Kaliningrad**

+7 (911) 473-82-90  
iec@iec-spb.ru  
13 Spasskaya str., pos. Seaside  
Kaliningrad region, Russia 238345

**Kaliningrad Branch Director:**  
Victor S. Larin



- **Charitable Foundation for Education “Buduscheye”**

+7 (812) 332-32-88  
iec@iec-spb.ru



**Executive Director of the Foundation:**  
Nikolay V. Boycev

### III. OUR FACILITIES. CONSTRUCTION AND INSTALLATION WORK



Facility name. Construction and installation work	Customer name	IEC status
St. Petersburg Yacht Club, located at "Hercules" yacht-port	"Zenit Arena", JSC	<b>Primary Subcontractor</b>
Quays number 12, 13 and 14, bank protection for Gutuevsky boot basin of St. Petersburg Big port seaport	Rosmorport, FSUE	<b>General Contractor</b>
Arrangement of protective dams for Primorskaya Thermal Power Plant in the Svetlovsk urban district	"Inter RAO - Engineering", LLC	<b>Primary Subcontractor</b>
Construction of special structures for Primorskaya Thermal Power Plant in the Svetlovsk urban district	"Inter RAO - Engineering", LLC	<b>Primary Subcontractor</b>
Reconstruction of outfitting quays for a shipyard in Kaliningrad region	A shipyard	<b>General Contractor</b>
Construction of the Paradnaya embankment and shore protection structures at Oktyabrsky Island, Kaliningrad	«RUZKS», Regional Government Agency	<b>General Contractor</b>
Construction of quay walls in Zelenogradsk, Kaliningrad region	«Baltberegozashita», Regional Government Agency	<b>General Contractor</b>
Reconstruction of quays for container handling and the RO-RO quay at St. Petersburg Big Port seaport	"KTSP", CJSC	<b>General Contractor</b>
Reconstruction of the quays at St. Petersburg Big Port seaport	"Rosmorport", FSUE	<b>General Contractor</b>
Dredging along the quays at St. Petersburg Big Port seaport	"Petrolsport", OJSC	<b>General Contractor</b>
Dredging at the Big Kronstadt raid	"Rosmorport", FSUE	<b>General Contractor</b>
Dredging works in the water area of St. Petersburg Big Port seaport's Baroque basin	"Rosmorport", FSUE	<b>General Contractor</b>
Dredging works at Ust-Luga sea trading port's South approach channel	"Rosmorport", FSUE	<b>General Contractor</b>
Dredging at the access channel to the Strelna village's harbor	"Rosmorport", FSUE	<b>General Contractor</b>
Dredging works at the Big Turukhtanny basin's water area	"Rosmorport", FSUE	<b>General Contractor</b>
Dredging along the quay number 112A at St. Petersburg Big Port seaport	"Rosmorport", FSUE	<b>General Contractor</b>
Dredging works at the Ust-Luga commercial seaport's Southern and Northern parts	"Rosmorport", FSUE	<b>General Contractor</b>
A sports center with universal playing hall construction	Construction and Road Management Committee of Novgorod region	<b>General Contractor</b>
Eastern water supply station construction, Kaliningrad	"Vetlan-Stroy", LLC	<b>Subcontractor</b>
Reconstruction of quays and territory of the container terminal, including engineering networks in St. Petersburg	"PKT", CJSC	<b>General Contractor</b>
Dredging of the approach channel and water area of the sea terminal for transshipment of rolling cargo at Vistino village, Leningrad region	"Rosmorport", FSUE	<b>General Contractor</b>

### III. OUR FACILITIES. SURVEY & DESIGN WORK



Project name. Survey & design work	Customer name	IEC mission
Survey and design work on the project: "Reconstruction of the multi-purpose complex YUG-2, port Ust-Luga Survey and design work on the object: "Primorsky universal transshipment complex"	"NKT", LLC "Primorsky LPK", LLC	<b>General Designer</b> <b>General Designer</b>
Design work on the project: "Reconstruction of the quays of the seaport" Big Port St. Petersburg"	"Rosmorport", FSUE	<b>General Designer</b>
Design work on the project: "Berthing facilities, water intake, water outlet and social infrastructure facilities for the timber industry complex at the industrial site of KrasLesInvest JSC	"Peuru Rus", LLC	<b>Project Designer</b>
Design work on the project: "Reconstruction of the quay of Ust-Luga commercial sea port"	"Factor" Timber terminal, LLC	<b>Project Designer</b>
Design work on the project: "Modernization of onshore facilities and structures", Salekhard	"Ob-Irtyshvodput" Administration, FSE	<b>General Designer</b>
Design work on the project: "Construction of a quay in the seaport Big Port of St. Petersburg"	"Rosmorport", FSUE	<b>General Designer</b>
Survey and design work on the project: "Construction of a wood-chemical complex in the Yenisey district of the Krasnoyarsk Territory. Objects and facilities of the river port of the timber-chemical plant	"Sibirsky Les", LLC	<b>Project Designer</b>
Survey and design work on the project: "Construction of a marine terminal of thermal power plant as part of a capital construction project Construction of a power plant in the Svetlovsk urban district"	"COTES", CJSC	<b>Project Designer</b>
Survey and design work on the facility "Reconstruction of quays and Gutuevsky basin"	"Rosmorport", FSUE	<b>General Designer</b>
Development of working documentation for the facility: "Land reclamation at Krestovsky Island", St. Petersburg	"Intex", LLC	<b>Project Designer</b>
Survey and design work on the facility "Land reclamation at Krestovsky Island", St. Petersburg	St. Petersburg Transport Infrastructure Development Committee	<b>General Designer</b>
Feasibility study for the creation of an artificial island in the Caspian Sea	Caspian Oil Company LLC	<b>General Designer</b>
Survey and design work for the facility: "The group of buildings for accommodation of OMON and OMSN units of the Internal Affairs Directorate in the Novgorod region"	Department of Internal Affairs of the Novgorod region	<b>General Designer</b>
Design work on the project: "Construction of the second continuous route on the Sochi-Adler section of the North Caucasus Railway"	"Lenmetrogioprotrans" R&D Institute, OJSC	<b>Project Designer</b>
"Lenmetrogioprotrans" R&D Institute, OJSC	"Okhta", Social and Business Center, CJSC	<b>Project Designer</b>



### III. EXAMPLES OF IEC PROJECTS

---

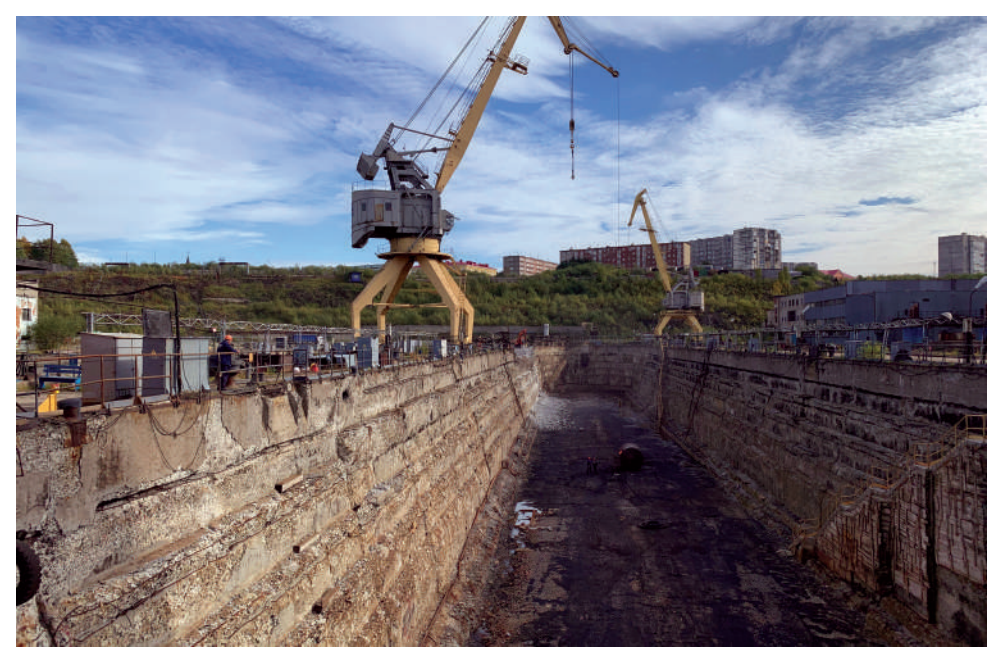
#### Ship Repair Center Zvyozdochka, Murmansk

Reconstruction and technical re-equipment of a two-chamber dry dock

Customer: **35 SRZ (Zvyozdochka SRC's branch)**

Development of detailed documentation, construction and installation works.

Commencement / completion of work:  
from 10.07.2019 to 15.12.2022





### III. EXAMPLES OF IEC PROJECTS

---

#### **Completion of the construction of an open outfitting slipway for DVZ Zvezda JSC**

Construction, installation, commissioning, supply of equipment and materials

The works are part of the capital construction project “Construction of the shipyard **Zvezda-DSME**, 1st stage”. Expansion of the existing capacities of **DVZ Zvezda JSC** to ensure the construction of marine transport and special vessels (Creation of the **shipbuilding complex Zvezda**) 1st phase of construction.



The total area of the facility is 17 ha.  
The volume of concrete work is 240,000 m<sup>3</sup>, including 80 000 m<sup>3</sup> of marine concrete works.  
**6 500 piles were installed:** 38 m deep, with diameters from 0.820 to 1.5 m.



### III. EXAMPLES OF IEC PROJECTS

---

#### Hull facilities building for DVZ Zvezda JSC

Construction, installation, commissioning, supply of equipment and materials

The works are part of the capital construction project “Construction of the shipyard **Zvezda-DSME**, 1st stage”. Expansion of existing capacities of **DVZ Zvezda JSC**. The building structure erected, finishing work carried out, crane and machine tool equipment installed, metalworking line and paint shops launched. The facility commissioned.





### III. EXAMPLES OF IEC PROJECTS

---

#### **Blocks assembly shop for DVZ Zvezda JSC**

Construction, installation, commissioning, supply of equipment and materials

The project is under construction as part of the IV stage of the construction of the facility “Construction of the shipyard Zvezda-DSME, 1st stage”. The main purpose of the shop is providing the preliminary assembly of ship hull structures (for tankers, gas carriers and supply vessels) and of civil marine equipment (drilling platforms). Works performed on the fabrication and installation of pile-grillage foundation. More than 1 000 piles were installed.



### III. EXAMPLES OF IEC PROJECTS

---



#### **Outfitting and modular assembly shop for DVZ Zvezda JSC**

Construction, installation, commissioning, supply of equipment, materials  
The project is under construction as part of the XI stage of construction of the facility “Construction of the shipyard **Zvezda-DSME**”. The shop production facility is located in a single-story building of a complex shape with four-story extensions of office and welfare buildings.



#### **Pipe-processing shop for DVZ Zvezda JSC**

Construction, installation, commissioning, supply of equipment, materials  
The project is under construction as part of the X stage of construction of the facility “Construction of the shipyard **Zvezda-DSME**”. The pipe-processing shop is located in a building consisting of two parts - production facility and auxiliary three-story office and welfare extension.



#### **Mechanical assembly shop, equipment and order picking warehouse for DVZ Zvezda JSC**

Construction, installation, commissioning, supply of equipment and materials  
The project is under construction as part of the XII stage of construction of the facility “Construction of the shipyard **Zvezda-DSME**”. The mechanical assembly workshop includes several production sites: machining, pipe manufacturing, fabrication of hull outfitting nomenclature products, hull metalwork outfitting shop.



### III. EXAMPLES OF IEC PROJECTS

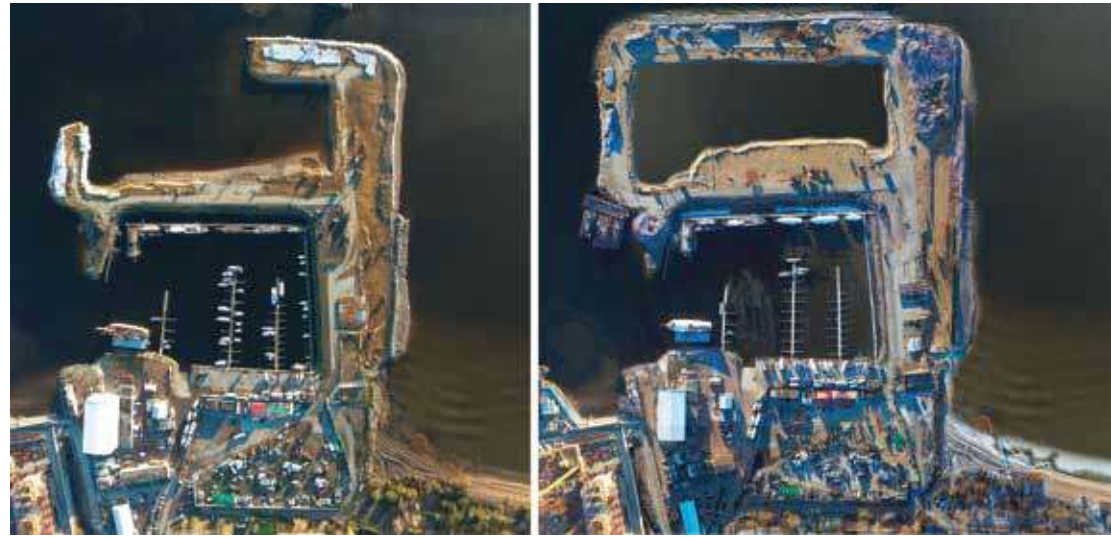
#### St. Petersburg Yacht Club at “Hercules” yacht-port

Stage III of capital construction (hydraulic structures) of the St. Petersburg Yacht Club facility in “Hercules” yacht-port, located at St. Petersburg, Lakhta settlement, 19 Beregovaya str.

**Customer:** Zenit Arena, JSC

**Commencement /completion of work:** June 2018/May 2020

**IEC mission:** Primary Subcontractor



**Quay wall length:** 1.3 km

**Location:** open water area of the Gulf of Finland

**Amount of tube-piles Ø 1020 mm:** 18.5 thou. tons

**Dredging volume:** 121 000 m<sup>3</sup> of soil

#### Historical reference:

300 years ago, in 1718, the first yacht club in the world was created in St. Petersburg: Peter the First signed a decree on the Nevsky Fleet establishment: “...so that all ranks of people who live in St. Petersburg could travel by vessels under the sails at windy weather along the Neva river ”.





### III. EXAMPLES OF IEC PROJECTS

#### Reconstruction of the quays of Gutuevsky basin of St. Petersburg Big Port seaport

Quays №№ 12, 13 and 14, bank protection of Gutuevsky basin.

Client: "Rosmorport" N-W Basin Branch

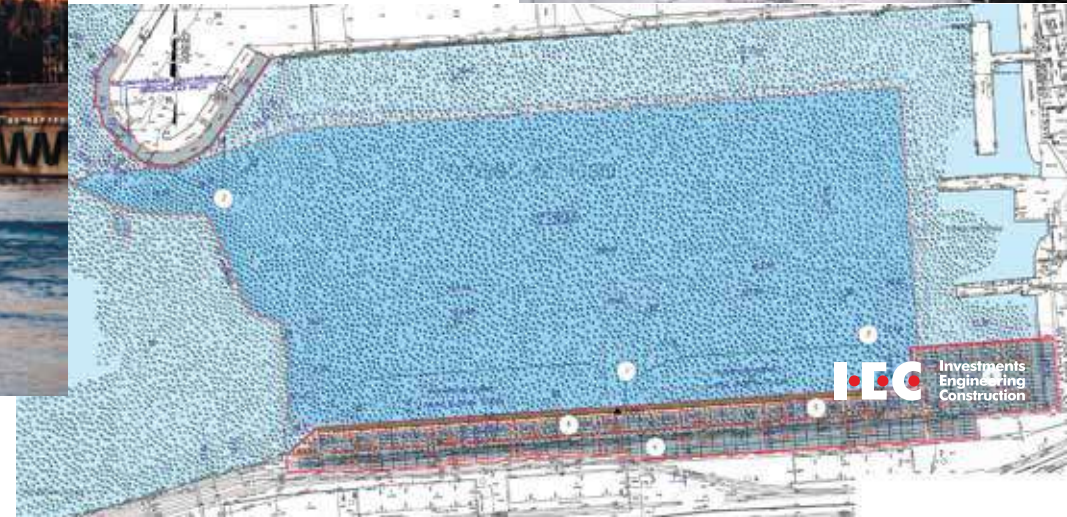
Commencement / completion of work: March 2018 / December 2020

IEC mission: General Contractor



Quay wall length: 0.4 km

Amount of piling: 2,3 thou. tons





### III. EXAMPLES OF IEC PROJECTS

#### A shipyard, Kaliningrad region

Reconstruction and technical re-equipment of the main and production facilities of the enterprise and power communications - stage 2, a shipyard in Kaliningrad region.  
Outfitting quays №№ 5, 6.

**Customer:** A shipyard

**Commencement/completion of work:** October 2017 - June 2019

**IEC mission:** General Contractor



**Quay wall length:** 0.6 km

**Amount of piling:** 6,1 thou. tons

**Tube-piles  $\varnothing$  820 x 10 mm:** 2.3 tons



### III. EXAMPLES OF IEC PROJECTS

#### **Primorskaya Thermal Power Plant (TPP), Kaliningrad**

Arrangement of protective dams, construction of a complex of special facilities

**Wall length:** 2.2 km

**Amount of tube-piles:** 7,9 thou. tons

**Excavation area:** 725 m<sup>2</sup>

**Depth of excavation:** more than 15 m

**IEC mission:** Primary Subcontractor

*Construction of special underground structures*



*Construction of shore protection structures*



*Comprehensive construction work*





### III. EXAMPLES OF IEC PROJECTS

#### Construction of the Paradnaya embankment and shore protection structures, Oktyabrsky island, Kaliningrad

**Customer:** GKU of Kaliningrad region. "Regional customer directorate of capital construction"

**Commencement / completion of work:**  
April 2015 - March 2018

**IEC mission:** General Contractor



The length of the quay walls: 1.7 km

#### Amount of piling:

- Tube-piles:  $\varnothing 1020 * 12$

- Metal piles without connectors:  
 $\varnothing 1020 * 12, 820 * 12$

15 thou. tons

In-situ concrete: 5 100 m<sup>3</sup>



### III. EXAMPLES OF IEC PROJECTS

#### Yacht Club, Zelenogradsk

Package of construction and installation works. Construction of quay walls in Zelenogradsk, Kaliningrad region, Trostyanka river.

**Customer:** GKU KO Baltberegozashchita

**Commencement / completion of works:**

September 2014 - July 2015

**IEC mission:** General Contractor



**The length of the quay walls: 0.74 km**

**Amount of piling:**

- Sheet-piles Larsse: 601

- Tube-piles:  $\varnothing$  1020 \* 12

- Metal piles without connectors:  
 $\varnothing$  1020 \* 12

2,4 thou. tons

**In-situ concrete: 2 300 m<sup>3</sup>**



### III. DREDGING FACILITIES

- 2017 – 2018** ● **FIFA World Cup 2018 Stadium, Kaliningrad, Solnechny Boulevard**  
Shore protection structures Construction at Oktyabrsky Island, Kaliningrad, from Vyssoky bridge to the boundaries of the land parcel of the FIFA World Cup 2018 Stadium.
- 2015** ● **Quay walls Construction in Zelenogradsk, Kaliningrad region**
- 2013** ● **St. Petersburg Sea Canal Reconstruction (Stage 1)**
- 2013** ● **Dredging works at St. Petersburg Big Port’s Barochny basin**
- 2013** ● **Dredging works at Ust-Luga seaport’s South approach channel**
- 2011 – 2012** ● **Water area formation of the Southern and Northern parts of the Ust-Luga sea trading port**, including the operational water area of the container terminal, Leningrad Region. The marine terminal for handling of rolling cargo near the Vistino village, Kingisseppsky municipal district, Leningrad region. Construction of the 1st and 2nd stage.

Excavated soil volume, thou. m3

100



90



430



160

125



737



